



Luminate Exchange

Product Roadmap

May 2024

BITSIGHT

Bitsight confidential & proprietary information

The digital economy has changed the nature of cybersecurity forever



The attack surface keeps expanding

Apps, devices, sensors, IoT, cloud, third & nth parties. \$2T of spending on digital transformation



Bad cyber events are on the rise

Ransomware attacks up 2.6x from 2019. KEV's up 67% since 2020.



Businesses are under pressure

From cyber insurers, regulators, capital markets, and customers

Bitsight Cyber Risk Management Solutions

Security Performance

Exposure Management



Asset discovery
External attack surface management

Governance and Reporting



Ratings, analytics and forecasting
Cyber risk quantification
Risk governance

Digital Supply Chain

Vendor Risk Management



Vendor on-boarding
Lifecycle management

Continuous Monitoring



Vendor risk monitoring
Vulnerability detection and response
Cyber risk rating

Cybersecurity Data Solutions

Cyber Data Solutions



Vulnerability and threat intelligence data feeds
Advanced threat insights

Cyber Risk Analytics Engine



Cyber Risk Analytics Engine - Investment Themes

Empowering Bitsight's Cyber Risk Management Solutions

Asset Discovery

Continuously
attribute IPs and
domains to
organizations

Security Observables

Consistently
gathering a wide
range of security
observables

Next Generation Ratings

Maintain high
correlation to
negative outcomes
and promote
customer trust

Roadmap Themes

Exposure

Reduce **exposure** and increase **resilience** across the entire digital footprint

Trust

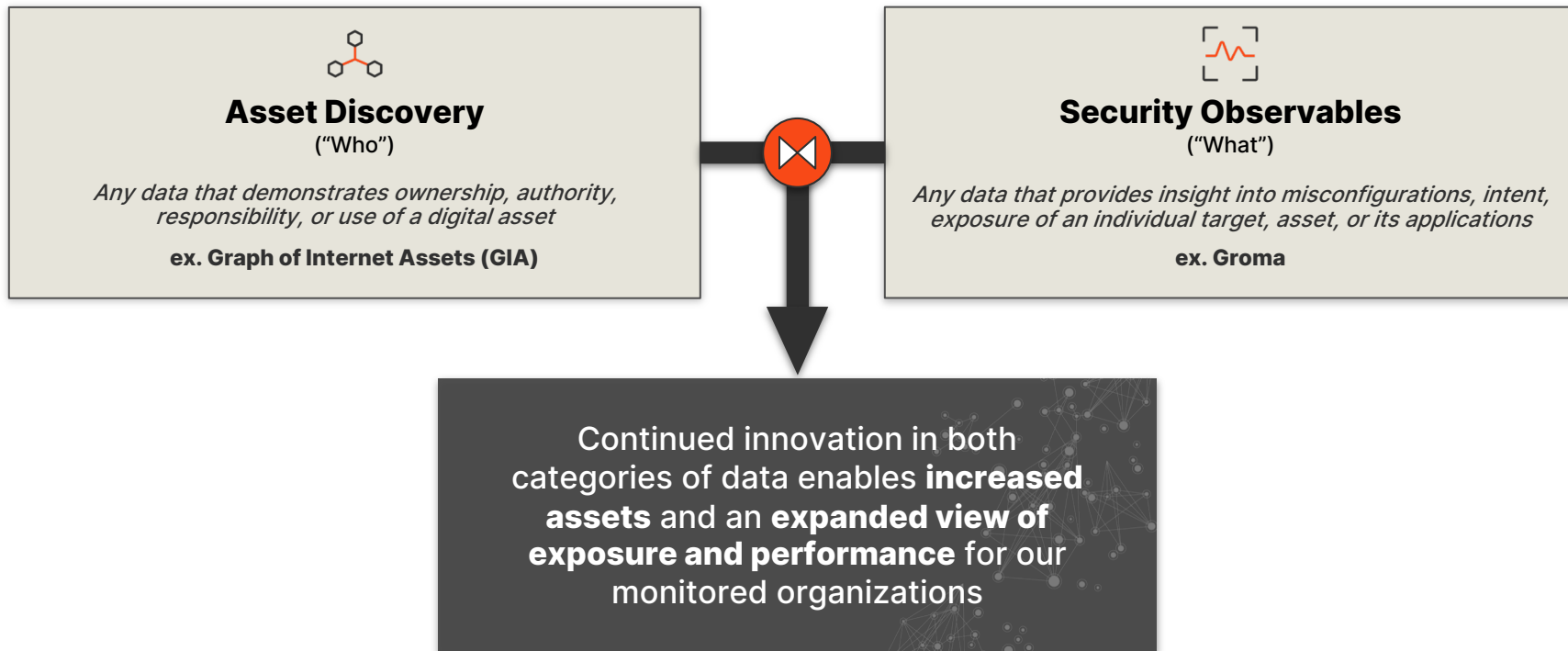
Manage **trust** across your supply chain and customers, accelerated by AI

Regulation

Help companies in cope with the massive **pressure of regulations** (NIS2, SEC, ASIC, DORA)

Data Collection Innovation

Exposure



Exposure Data Investments in FY25

Richer Asset Discovery

Platform for integrated Asset Discovery and Internet Scanning.

Higher Velocity New Data

New data platform to accelerate the development of new exposure products.

Broader Asset Data

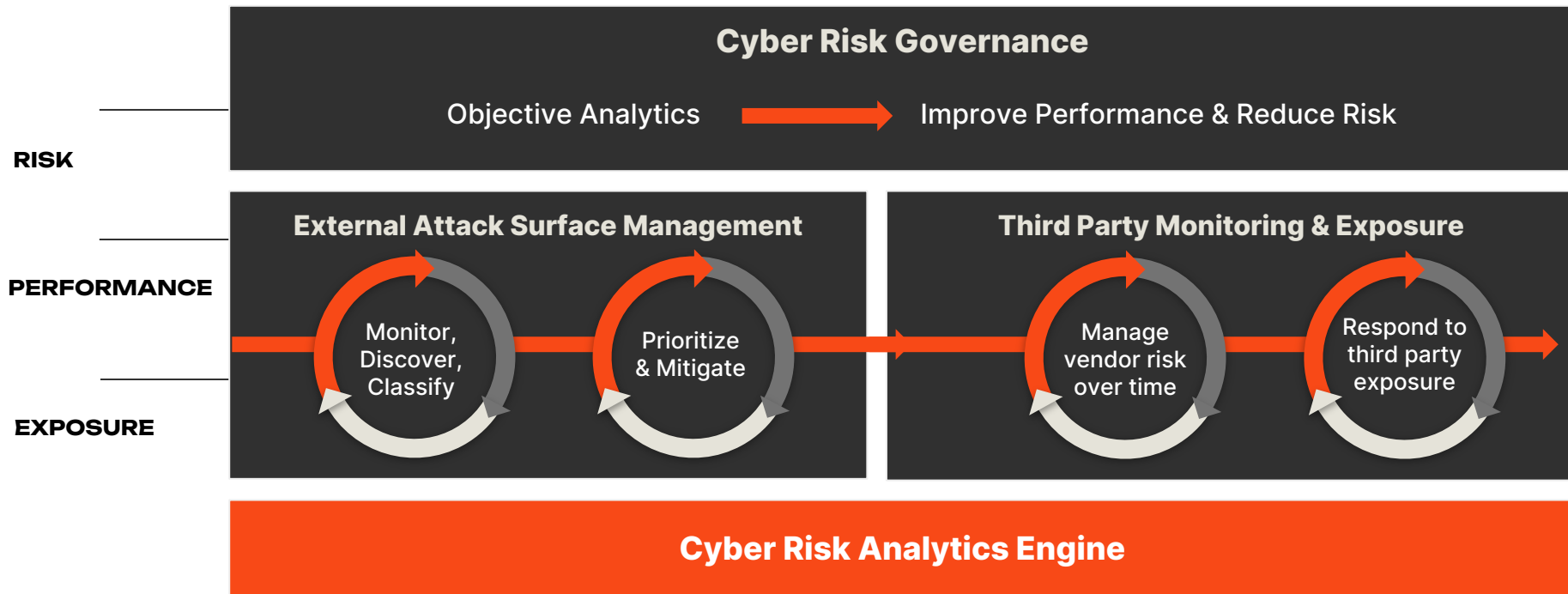
Staging for customer provided assets and probable assets.

Azure and GCP cloud assets.

Bitsight for Exposure Management

Exposure

Manage exposure across your enterprise and your supply chain



Build Trust across your Supply Chain & Customers

Launching Bitsight VRM & Trust Management Hub for an all-in-one cyber risk management experience

- Smarter third party due diligence
- Accelerated assurance with efficient sharing of compliance & security profile
- Effortlessly switch between jobs/applications

The screenshot displays the Bitsight Trust Management Hub interface, which is designed for managing cyber risk across the supply chain and customer base. The interface is divided into several sections:

- Top Navigation Bar:** Includes the Bitsight logo, user profile (Jane Smith, jane.smith@saperixinc.com), and links to Resource Center and Help.
- Left Sidebar:** Contains navigation links for Trust Management Hub, Dashboard, Documents, Connections, and User Management.
- Main Dashboard:**
 - Trust Management Hub:** Overview of trust management activities.
 - Activity the last 14 days:** A list of recent activities with filters for status (Pending, Completed) and company name.
 - Open Escalations (5):** A list of open escalations with details on creation, reporting, and remediation status.
- Vendor Risk Management Section:**
 - Vendor Profile:** Overview of a vendor's risk profile.
 - Requirements:** A list of requirements for vendors, categorized by risk level (e.g., Enterprise Risk Management, Information Assurance).
 - Assessment Setup:** Configuration for vendor assessments.
- Question 1 Mapped Risk Vectors:** A detailed view of a specific question, showing mapped risk vectors and findings.

Achieve Scale with AI

Bitsight VRM and Trust Management Hub



Document Analyzer

Complete with summarized insights and action plans.



Auto-response Generator

Swift and accurate responses to every inquiry.



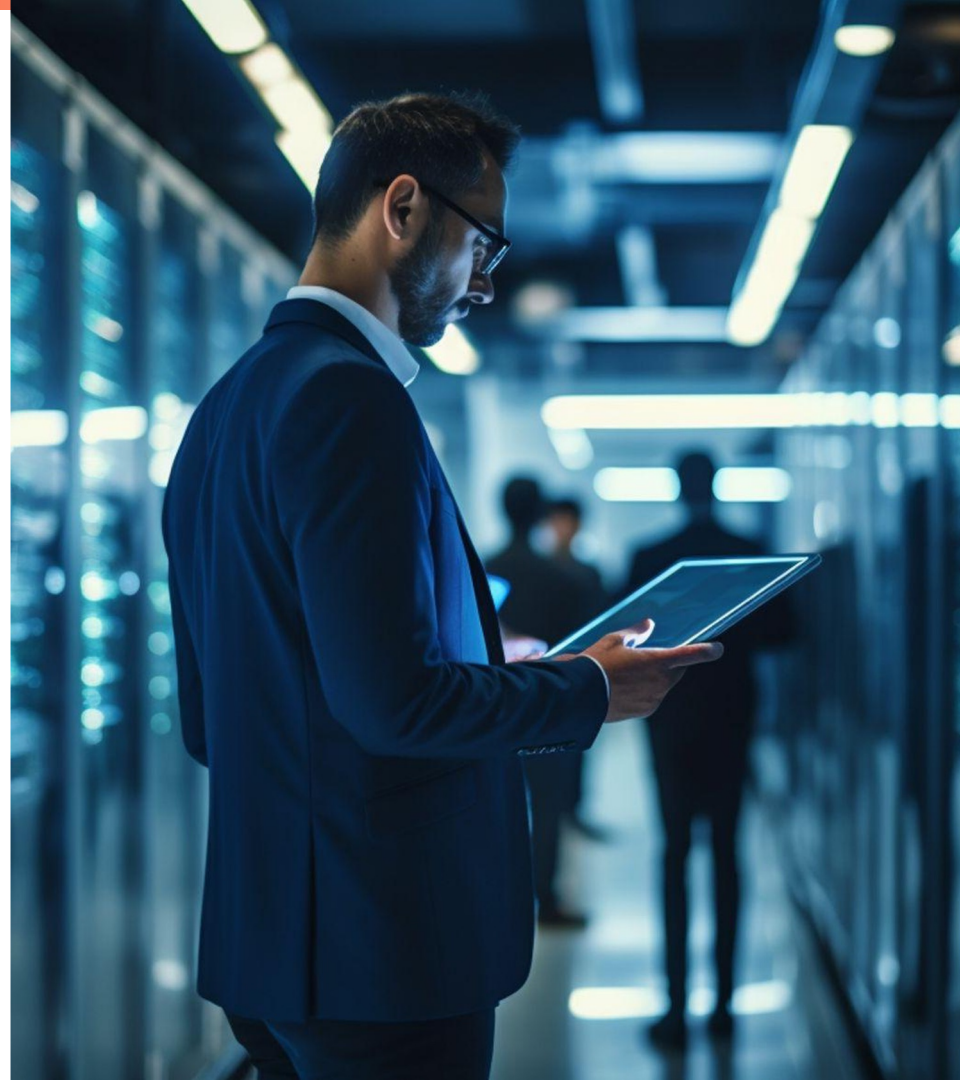
Evidence-Based Assessments, every time

Seamlessly integrated objective-data across any assessment.

Governed for success

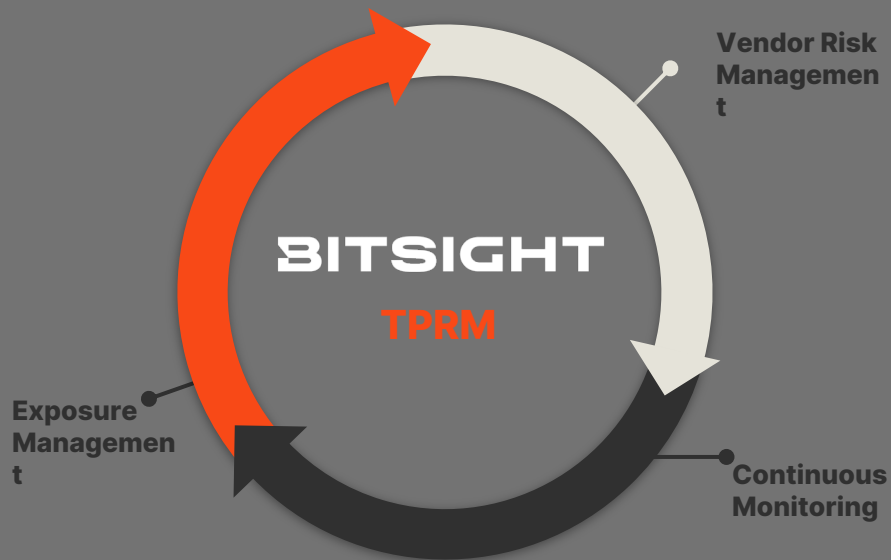
We care about your data.

Centralized AI council, led by our Chief Risk Officer, to monitor and manage the risks associated with AI technology.



Preparing for NIS2

End to End Third Party Risk Management



NIS2 Reporting



VRM Data Residency



Coming Soon - Now through October

Enterprise Security (SPM)

- ▶ Attribution explainability
- ▶ Exposure metrics
- ▶ Findings-based alerts
- ▶ FQ actionability
- ▶ Trust Management Hub

Digital Supply Chain (TPRM)

- ▶ VRM feature additions
- ▶ NIS2 & DORA Assessment Mapping
- ▶ Critical asset monitoring
- ▶ Self-service vendor access
- ▶ SAP Ariba Integration

Cyber Risk Analytics Engine

- ▶ RAU 2024
- ▶ Cloud Infrastructure Sync (Azure, Google Cloud)
- ▶ Enhanced attribution automation
- ▶ ICS/OT Data Feed
- ▶ Rollout of faster, more comprehensive scanning infrastructure

Areas of Exploration



Threat Intelligence

Exploring strategic, tactical, and operational threat intelligence as an extension to first- and third-party solutions

Could involve organic investment in threat intel data or partnerships with threat intel providers



Cyber Data Feeds

Continuing investment in cyber data feeds through our data solutions product line

Exploring applications of data feed products and query-based data products



Add'l Gen AI Opportunities

Investigating additional applications of Gen AI technology to drive innovation & customer value across our product lines

Extends current roadmap for AI



Roadmap Detail



Cyber Risk Analytics Engine

Better Data Driven Decisions

Investing in our Cyber Risk Analytics Engine



Cyber security risk vectors and ratings

- Improved asset classification for service providers
- Better explainability for risk vectors
- Expanded coverage via Web App Sec and other domain-based risk vectors

Cyber Risk Analytics Engine - Investment Themes

Empowering Bitsight's Cyber Risk Management Solutions

Asset Discovery

Continuously attribute IPs and domains to organizations

Next Up

- GIA CIDR Suggestions
- Cloud Infra Sync (Azure, GCP)
- Probable Assets

Security Observables

Consistently gathering a wide range of security observables

Q1

- Groma rollout for 447,000 entities
- DMARC
- New CVEs + Malware families

Next Up

- Groma rollout continued
- OT/ICS data feed

Next Generation Ratings

Maintain high correlation to negative outcomes and promote customer trust

Q1

- RAU 2024 preview
- Continued DCE rollout

Next Up

- RAU Go Live - July
- Ongoing DCE rollout
- RAU 2025 planning

Coming Soon - Now through October

Asset Discovery

- Cloud Infrastructure Sync
 - Azure
 - Google Cloud
- Enhanced CIDR attribution automation utilizing Bitsight's Graph of Internet Assets (GIA)
- Subsidiary discovery improvements

Security Telemetry

- Graded DMARC Risk Vector
- Rollout of faster, more comprehensive scanning infrastructure
 - 3x hostname coverage
 - 30% more SSL config findings
 - 55% more WAH findings
 - 15% more SSL cert findings
- New CVE, malware families and product fingerprints
 - 50% more CVEs from fingerprints
- OT/ICS Feed

Next Generation Ratings

- Entity with delegated security control batch releases
- RAU 2024 Ratings Update



SPM Roadmap

Bitsight Security Performance Management

Strengthening Enterprise Security



SPM Product Investment Themes

Reduce exposure, strengthen performance and report with confidence

External Attack Surface

Manage your attack surface more effectively with comprehensive **asset discovery**, a **richer view of exposure issues**, **remediation capabilities**, and **analytics** that support smarter decision-making and communication.

Governance & Analytics

Drive strong cyber security performance with **streamlined planning tools** and **actionable, objective analytics** that enable alignment across your team and with business stakeholders.

Assurance

Confidently and efficiently **share evidence of cyber security performance** to internal and external stakeholders to create trust and enable business growth.

Coming Soon - Now through October

External Attack Surface Management

- Exposure metrics
- Cloud sync - Azure
- Vendor discovery for SPM
- Attribution explainability
- Findings-based alerts
- Threat intel: Exposed Credentials enhancements
- Jira Integration

Governance & Analytics

- Patching Cadence in Rating Improvement, Peer Analytics
- Bitsight Rating forecast based on Risk Remediation Plan grade change
- FQ actionability (Phase 1)

Assurance

- Trust Management Hub launch (July)

Areas of exploration

Instant Remediation

Streamline remediation steps to allow for immediate feedback and verification of findings, ensuring faster rescan periods.

Accelerate resolution of security findings with quicker rescans, providing instant verification and clarity for users.

Attribution data

Assess the value of additional (lower confidence) data

Evaluate the accuracy of asset maps that combine data from lower confidence sources, ensuring customers have a reliable and comprehensive view of their digital assets for better decision-making.

Domain Squatting v2

Enhance and upgrade Domain Squatting to get enhanced threat intel and deeper insights.

Monitor more domains and separate squatting on important domains from the noise.



Third Party Risk Management Roadmap

Bitsight for Third Party Risk Management (TPRM)

Securing the digital supply chain

01
Risk

Vendor Risk Management

Automated
Assessments



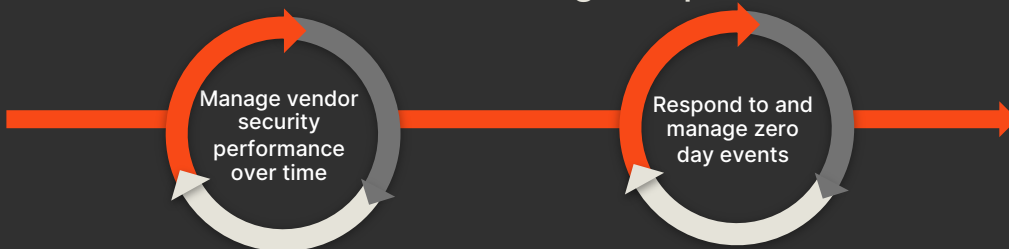
Evidence to Validate



Growing Vendor
Network

02
Performance

Continuous Monitoring & Exposure



03
Exposure

Confident Assurance

- Provide Objective Evidence
- Customers, The Board, Investors

TPRM Investment Themes

Efficient and effective execution across the vendor lifecycle

Vendor Risk Management

Strengthen and streamline how vendor risk management is conducted with a **unified solution**, powered by more **external data, artificial intelligence and analytics**.

Continuous Monitoring

Enhance actionability through **advanced monitoring** of vendors' critical assets, ensuring a comprehensive view into cyber risk.

Exposure Management

Accelerate visibility and response to supply chain disruption and exposure with speed and accuracy, through data and workflow enhancements.

Holistic Platform Experience

Integrated and streamlined workflows spanning Vendor Risk Management (VRM), Continuous Monitoring (CM), and Exposure Management for seamless operations.

Coming Soon - Now through October

VRM & Trust Management Hub

Trust Management Hub Launch

VRM Features

- Enrich Vendors Information
 - Download Vendor Data to CSV
 - Vendor Internal Notes
 - Review Artifacts
 - NIS2 Assessment Mapping
 - Osano & Netskope Scans
 - Invites History on Audit Trail
 - Due date Custom Notifications
 - Reporting V1
-
- Document Analyzer (AI)
 - Data Residency for Europe

Continuous Monitoring

NIS2 & DORA Assessment Mapping

Critical asset monitoring

Self-Service vendor access
(customer-hosted invitation URL offering vendors direct access)

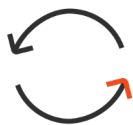
SAP Ariba Integration

Vulnerability Detection & Response

Architecture support for expanded exposure risk types (Infections, Breaches, Complex Threats like End-of-life software running on an asset with open-ports)

Continued expansion of third party exposure data

Areas of Exploration



Integrated TPRM Workflows

- Further integration of VRM, Continuous Monitoring, and Vulnerability Detection capabilities
- Complete view of third party ecosystem & life cycle
- Data-driven workflow automation



Critical Asset Monitoring

- Holistic view of the attack surface that includes your infrastructure, and the key vendor infrastructure that completes that business process
- Enhanced monitoring to analyze and manage risk for critical third party assets



Query-Based Search Product

- Evaluate the opportunities for a Bitsight query based search product to support threat intel jobs



Thank you!

111 Huntington Ave
Suite 2010
Boston, MA 02199
USA

bitsight.com
sales@bitsight.com

BITSIGHT